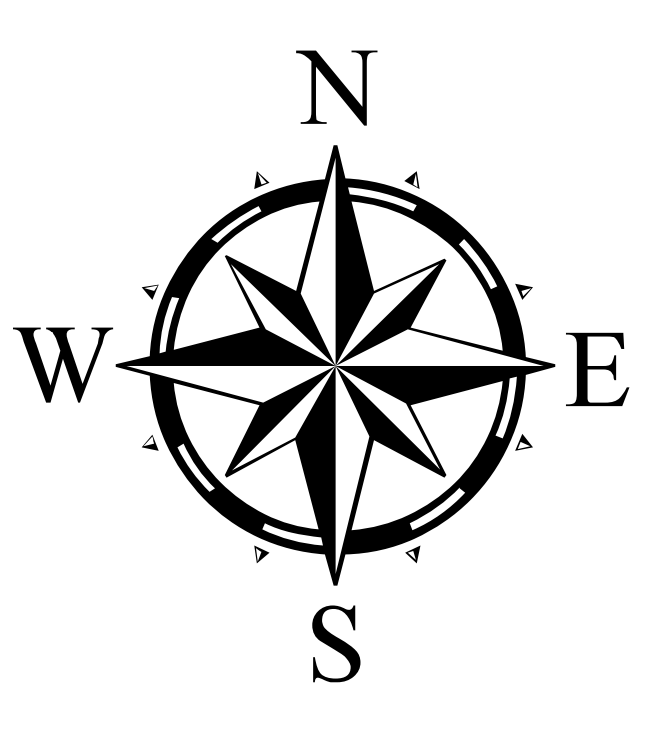
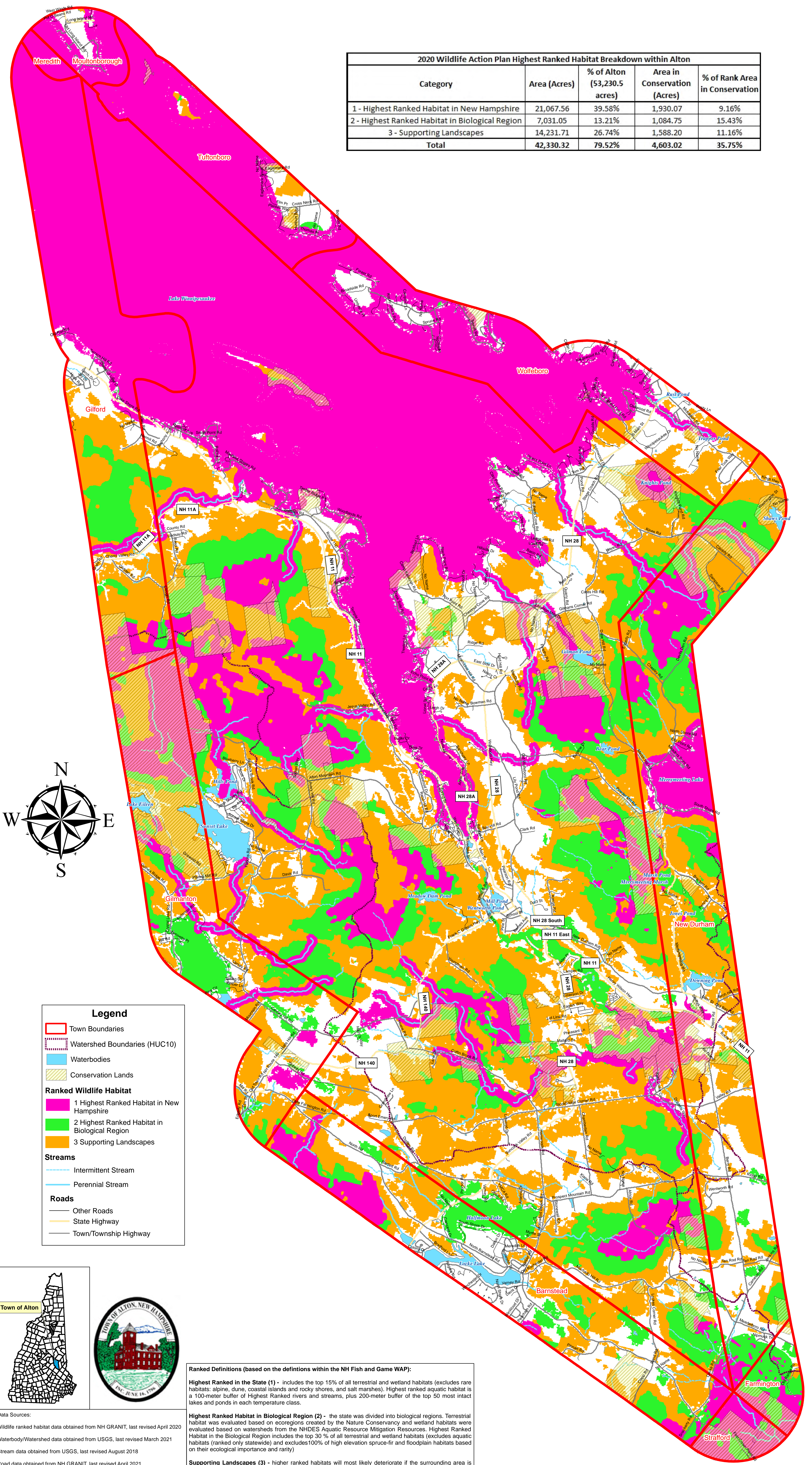


New Hampshire Fish & Game Ranked Wildlife Habitat (2020 Wildlife Action Plan) Town of Alton

Category	Area (Acres)	% of Alton (53,230.5 acres)	Area in Conservation (Acres)	% of Rank Area in Conservation
1 - Highest Ranked Habitat in New Hampshire	21,067.56	39.58%	1,930.07	9.16%
2 - Highest Ranked Habitat in Biological Region	7,031.05	13.21%	1,084.75	15.43%
3 - Supporting Landscapes	14,231.71	26.74%	1,588.20	11.16%
Total	42,330.32	79.52%	4,603.02	35.75%



Legend

- Town Boundaries
- Watershed Boundaries (HUC10)
- Waterbodies
- Conservation Lands

Ranked Wildlife Habitat

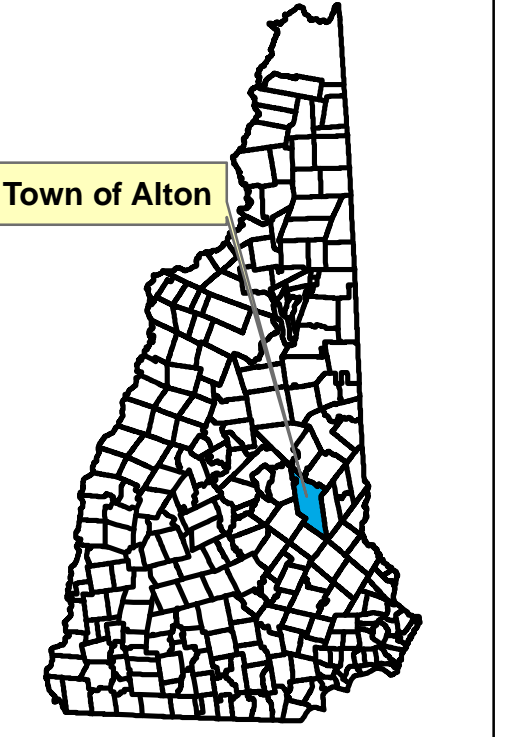
- 1 Highest Ranked Habitat in New Hampshire
- 2 Highest Ranked Habitat in Biological Region
- 3 Supporting Landscapes

Streams

- Intermittent Stream
- Perennial Stream

Roads

- Other Roads
- State Highway
- Town/Township Highway



Ranked Definitions (based on the definitions within the NH Fish and Game WAP):

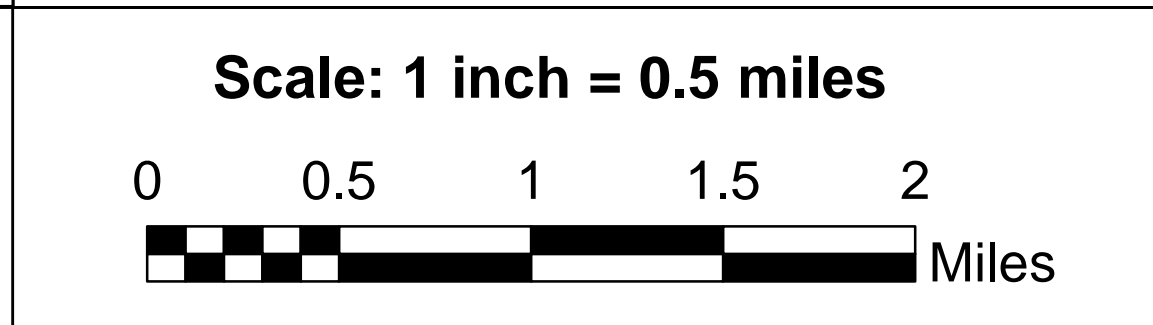
Highest Ranked in the State (1) - includes the top 15% of all terrestrial and wetland habitats (excludes rare habitats: alpine, dune, coastal islands and rocky shores, and salt marshes). Highest ranked aquatic habitat is a 100-meter buffer of Highest Ranked rivers and streams, plus 200-meter buffer of the top 50 most intact lakes and ponds in each temperature class.

Highest Ranked Habitat in Biological Region (2) - the state was divided into biological regions. Terrestrial habitat was evaluated based on ecoregions created by the Nature Conservancy and wetland habitats were evaluated based on watersheds from the NHDES Aquatic Resource Mitigation Resources. Highest Ranked Habitat in the Biological Region includes the top 30 % of all terrestrial and wetland habitats (excludes aquatic habitats (ranked only statewide) and excludes 100% of high elevation spruce-fir and floodplain habitats based on their ecological importance and rarity)

Supporting Landscapes (3) - higher ranked habitats will most likely deteriorate if the surrounding area is degraded. This ranked area, consists of the remainder of the top 50% of all habitats in the biological region, and top-ranked forest blocks identified by The Nature Conservancy.

Data Sources:
 Wildlife ranked habitat data obtained from NH GRANIT, last revised April 2020
 Waterbody/Watershed data obtained from USGS, last revised March 2021
 Stream data obtained from USGS, last revised August 2018
 Road data obtained from NH GRANIT, last revised April 2021
 Town boundary data obtained from NH GRANIT, last revised April 2013

Coordinate System: NAD 1983 StatePlane New Hampshire FIPS 2800 Feet
 Projection: Transverse Mercator
 Datum: North American 1983
 False Easting: 984,250.0000
 False Northing: 0.0000
 Central Meridian: -71.6667
 Scale Factor: 1.0000
 Latitude Of Origin: 42.5000
 Units: Foot US



NHF&G Ranked Wildlife Habitat - Alton NRI Map
 Created: September 28, 2021
 Last revised: October 6, 2022

Prepared for the Town of Alton, NH
 This map should only be used for planning purposes,
 not for legal bound interpretation.

Stoney Ridge Environmental, LLC
 8 Kiana Road
 Alton, NH 03809
 Phone: 603-776-5825